

## DRAWING TEST

(time: 4 hours)

### Subject no 1

**Section 1** of the portfolio requested you to draw *perspective or axonometric views of some famous, representative, heritage buildings etc.*

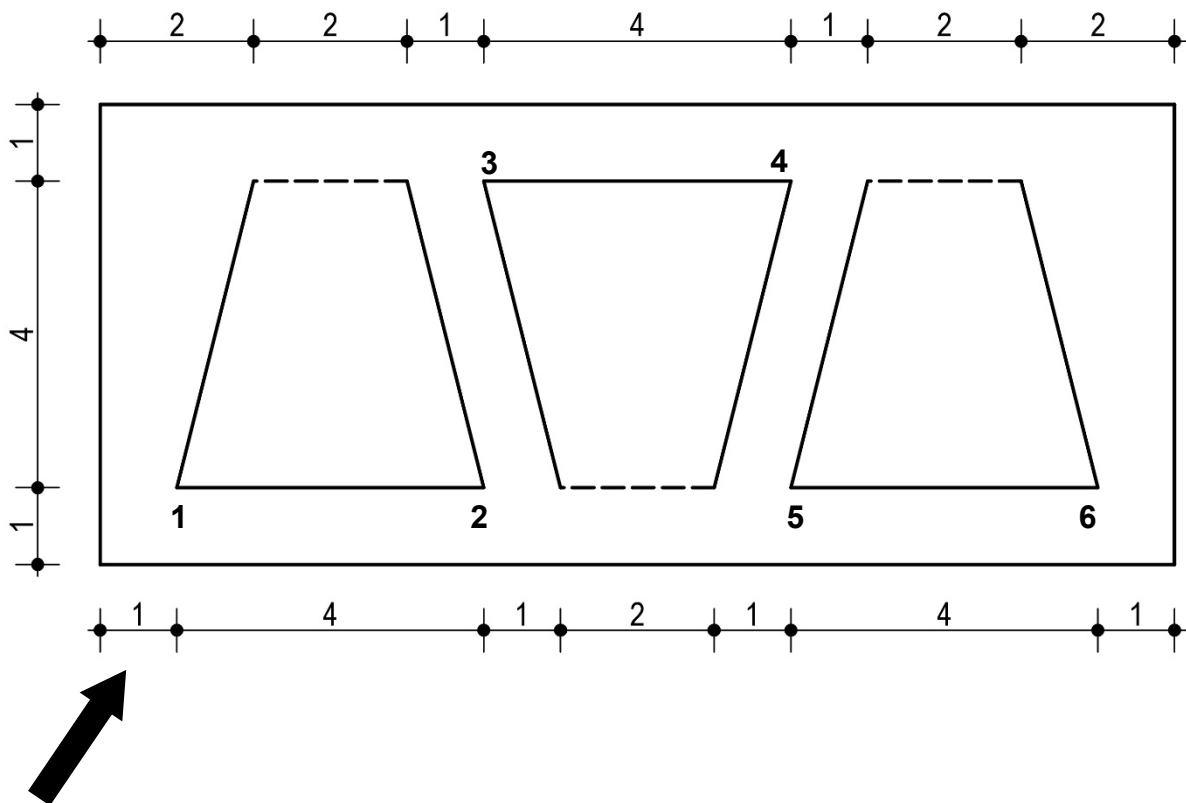
**Sketch by hand**, in perspective, one of the buildings presented in the portfolio, viewed from a different direction. The representation will be made in graphite.

### Subject no 2

From a rigid cardboard sheet, rectangular in shape, 6 x 14 cm, it is intended to draft a model at a scale of 1:100 (1 cm in model = 1 m in reality) of a pavilion that will be placed in a public space. The image below shows the cardboard sheet in plan, before its processing performed **only by cutting and bending**. Continuous lines (——) represent cuts, dashed lines (----) represent bends. The resulting object will be placed on a horizontal support plane, sitting only on the edges 1-2, 3-4 and 5-6, without adding other structural elements.

**Sketch by hand**, in perspective, at eye level, the image of the pavilion that will be made of thick, rigid metal sheet, looking in the direction indicated in the plan.

The representation will be made in graphite, with lights and shadows.

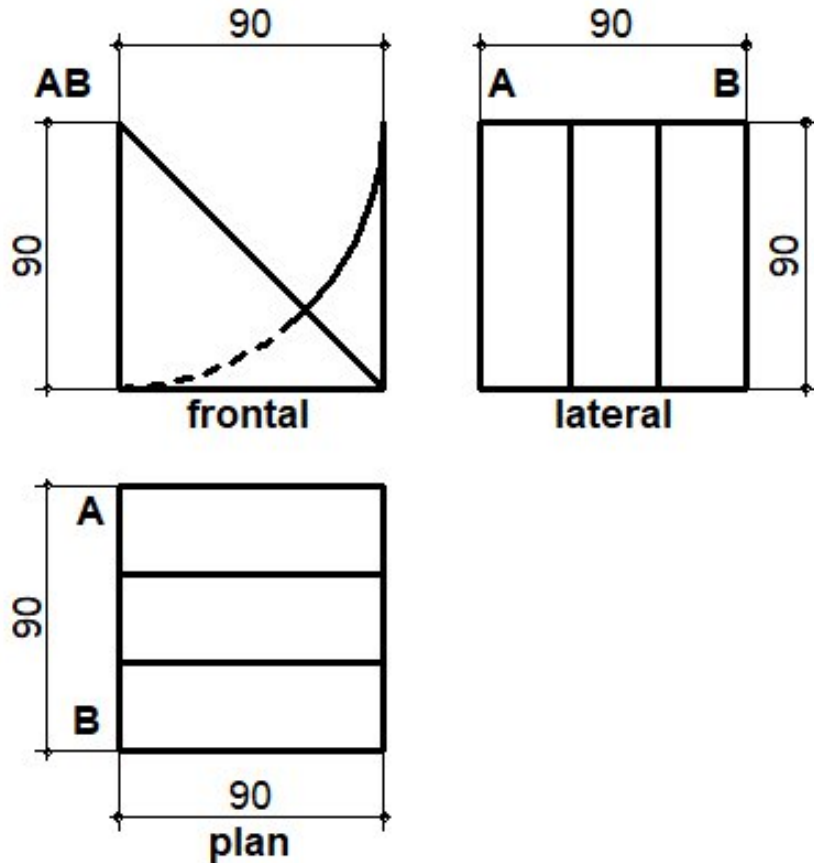


**Subject no 3**

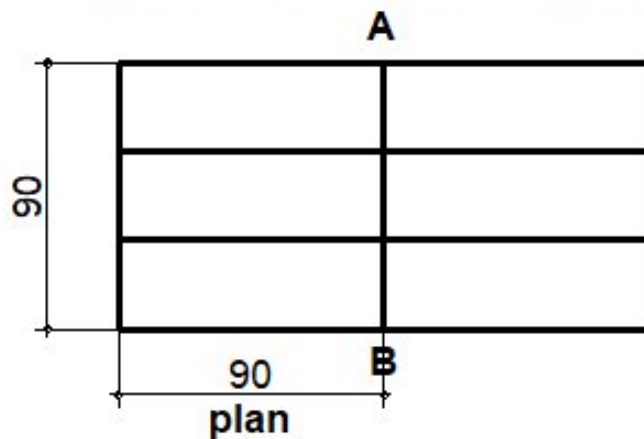
Image "a" represents the plan, front and side views of wooden object 1, with the dimensions expressed in mm. It is resulting from a cube by removing object 2 made of transparent solid plastic.

Image "b" represents the plan view of a composition made of wooden object 1 and object 2, of transparent plastic, obtained by rotating object 2 around the axis AB until its placement on the horizontal plane.

**Image a - object 1 views**



**Image b -  
plan view of object 1+object 2**



- Draw an isometric axonometric image of the assembly generated by the two objects, placed horizontally, by rotating object 2 around the axis AB until it is placed horizontally.

The scale of the axonometry will be 1: 1 (1 mm from reality = 1 mm from the drawing). The visible edges will be drawn with a solid line, and the invisible ones will be drawn with a dashed line.

The representation will be made in colored pencils, with lights and shadows.

#### **Subject no 4**

The image below represents the plan, front and side views of an architectural ensemble. The dark areas represent the shadows left by the volumes that generate this ensemble.

Draw a perspective of the ensemble at eye level, suggesting an office-administrative building.

The representation will be made in colored pencils, with lights and shadows.





**Note:**

- All subjects are mandatory.
- Respecting the pagination according to the below layout is mandatory.
- The representation of elements foreign to the content of the subjects is not allowed.

**Criteria for assessing the topics:**

- respecting the theme requirements;
- correctness of the solution;
- creative ability;
- perception and spatial representation;
- expressiveness and accuracy of the graphic presentation.

