

DRAWING TEST

(time: 3 hours)

Subject S 1

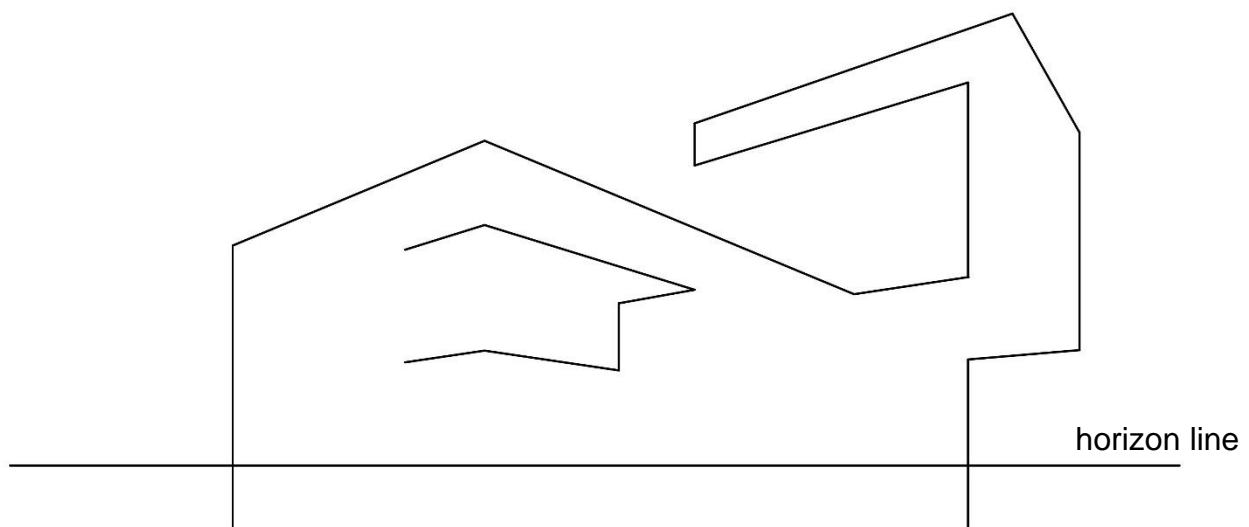
In the **1st Section** of the portfolio, it was required to make **some drawings representing perspective or axonometric views of some famous, representative, heritage buildings, etc.**

- Draw a facade (front view) of a building presented in your portfolio, in Section 1, which you consider representative. The representation, with lights and shadows, should be done in graphite.

Subject S 2

The image below shows, in a simplified manner, some edges and part of edges of an architectural object.

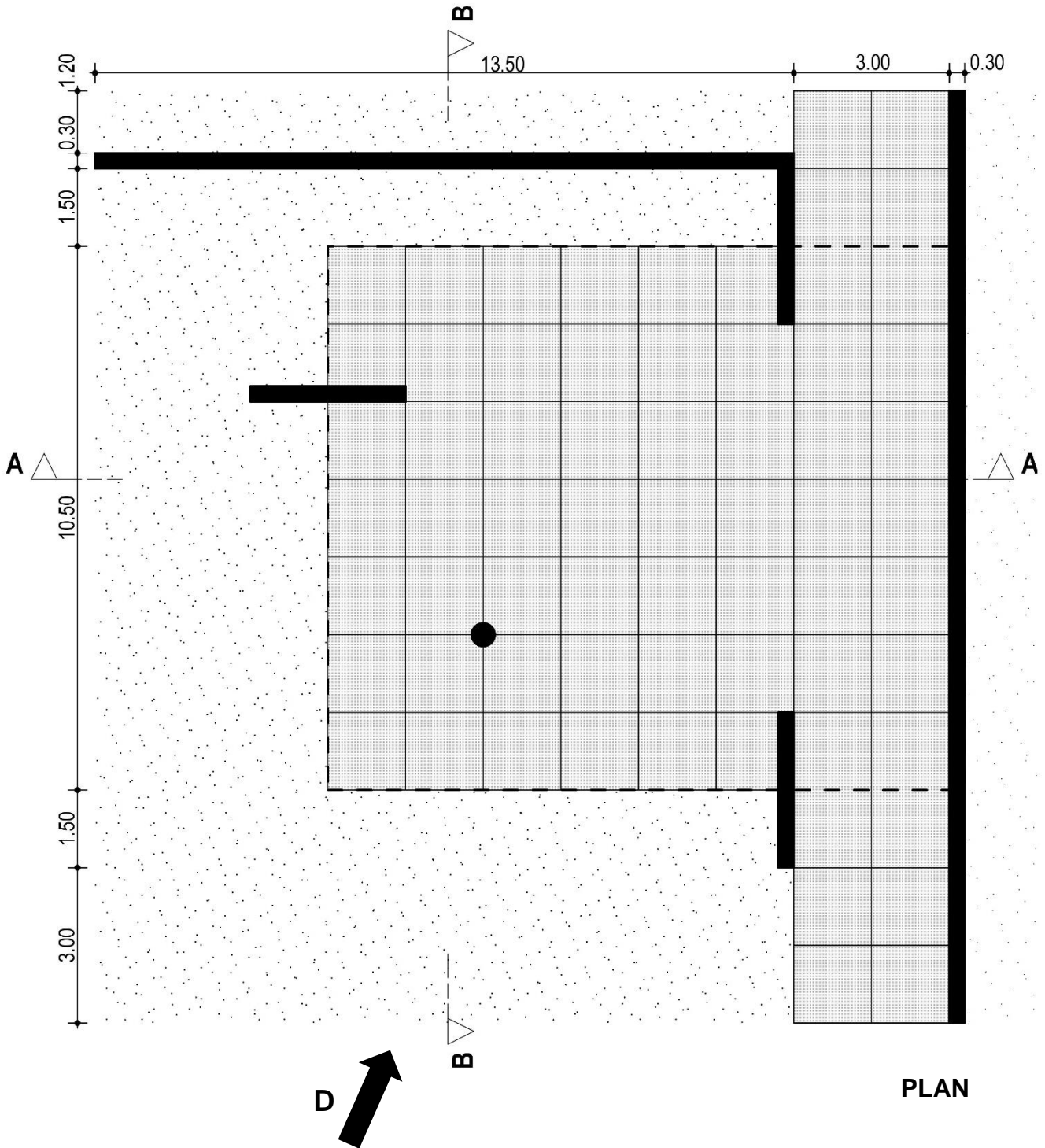
- Starting from this information, draw a perspective image of a possible architectural object, adding the missing edges and other elements you consider relevant: windows, doors, loggias, materials, textures, etc. The representation, with lights and shadows, should be done in graphite.

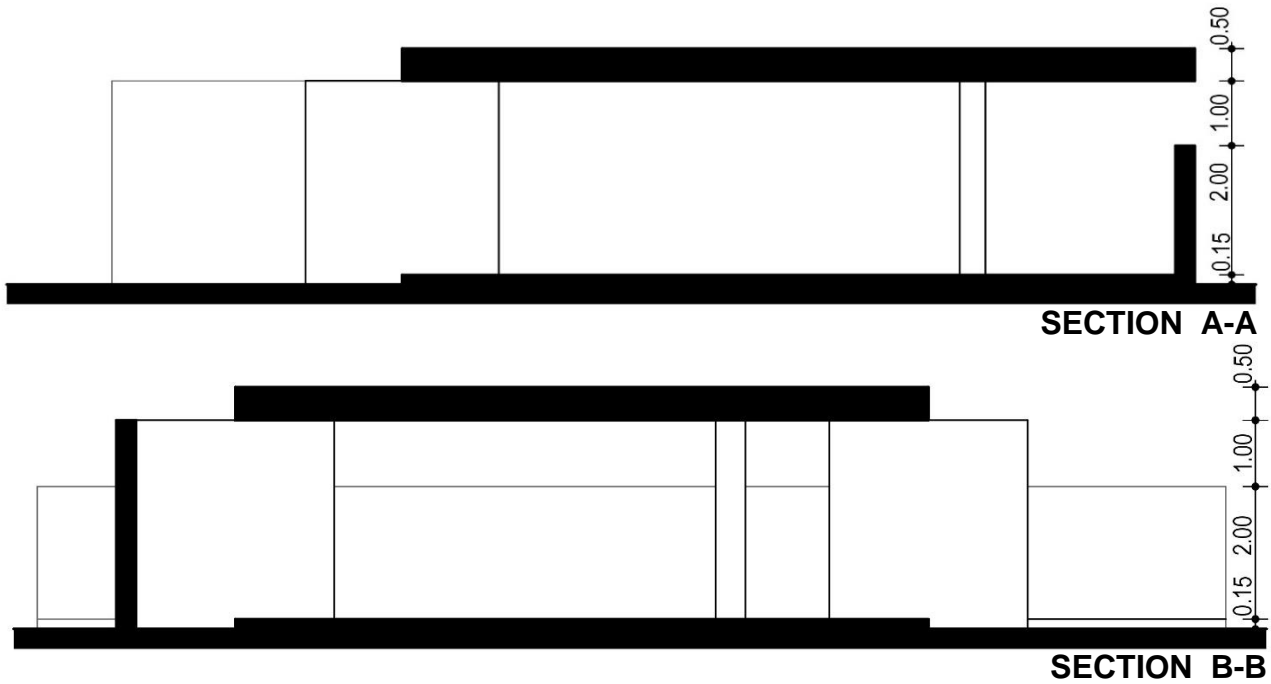


Subject S 3

The images below represent the plan and two vertical sections (A-A and B-B) of a pavilion located in a park. Dimensions are given in meters.

- Draw an eye-level perspective, from direction "D" indicated in the plan, including elements of architectural ambience: materials, colours, textures, entourage, etc. The representation should be done in coloured pencils, keeping the proportions.

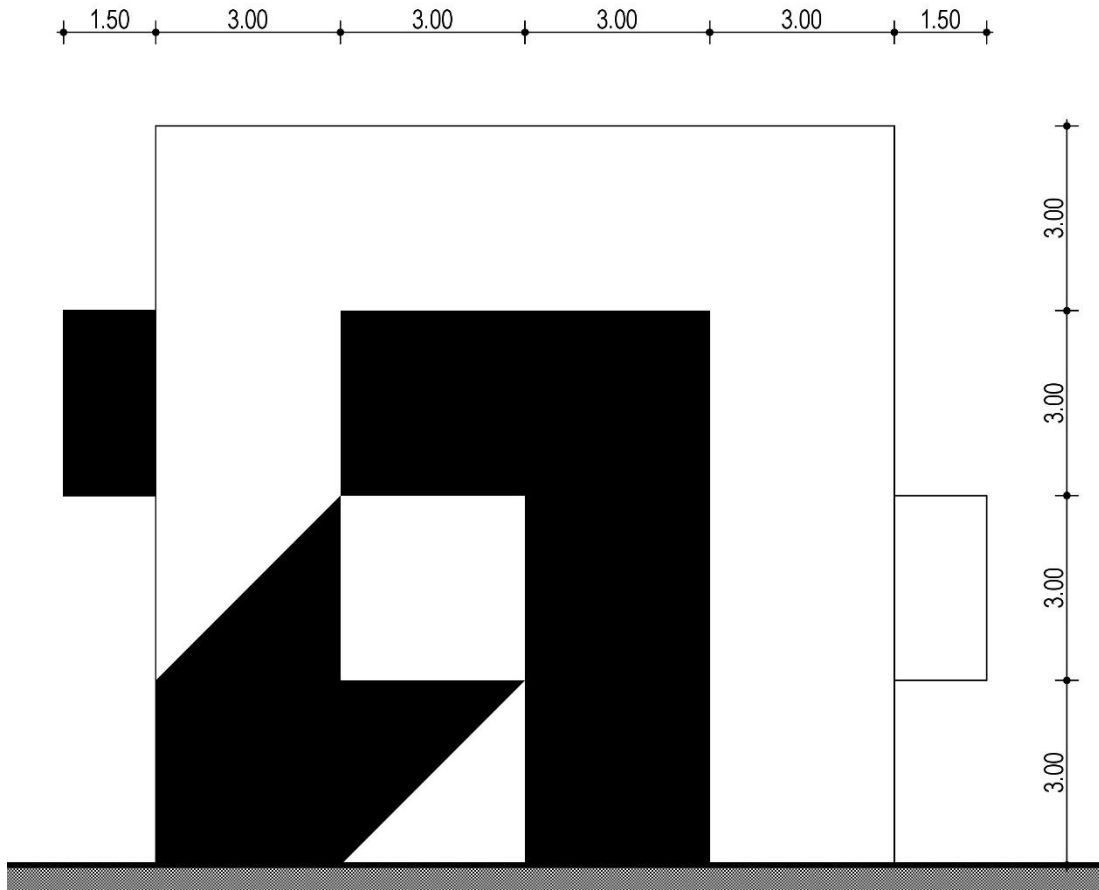




Subject S 4

The image below shows, in a simplified manner, the facade of a modern building. The main volume of the building is a cube with 12.00m edges from which volumes were extracted and to which volumes were added. The shadows are conventionally represented, in black, at an angle of 45°, and the given dimensions are in meters.

- Draw an eye-level two points perspective, of a possible variant of the building, which also includes the main facade. Without changing the volume, add details and architectural elements that you consider necessary: windows, doors, materials, textures, etc. The representation, with lights and shadows, should be done in graphite.



Note:

- All subjects are mandatory.
- Respecting the page layout below is mandatory.
- The representation of elements foreign to the subjects is forbidden.

Criteria for assessing the topics:

- respecting the theme requirements;
- accuracy of the solution;
- creative ability;
- perception and spatial representation;
- expressiveness and accuracy of the graphic presentation.

