

DRAWING TEST

(time: 4 hours)

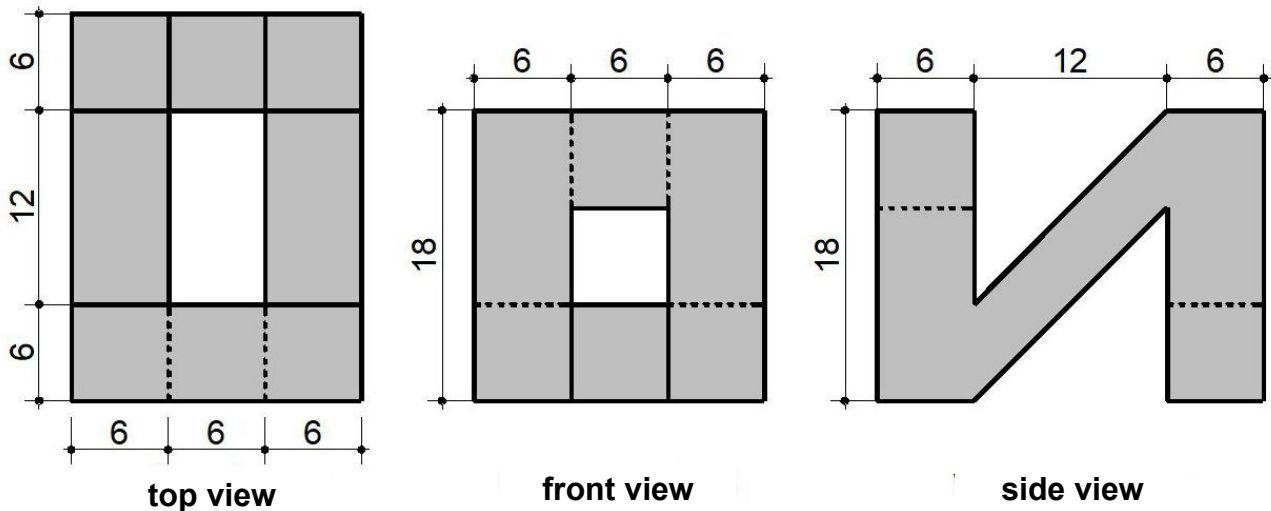
Subject no 1

Section 3 of the portfolio requested you to draw *overviews or detail images of architectural objects/ensembles represented in plans/sections/elevations/street fronts etc. as well as perspectives/axonometric views.*

Sketch by hand a perspective/axonometric view of an architectural object/ensemble presented in your portfolio, viewed from a different direction. The representation will be made in graphite.

Subject no 2

The images below represent the following views: top, front and side, of **object A**. **Object A** resulted from a parallelepiped having as base a rectangle with sides of 18 cm and 24 cm respectively, from which a second **object B** was extracted, the latter making the parallelepiped a whole.

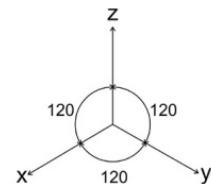


Using your drawing tools, draw the following:

- an isometric axonometric view of object A.
- an isometric axonometric view of object B.

The drawing scale will be 1:3 (3 cm in reality = 1 cm in drawing)

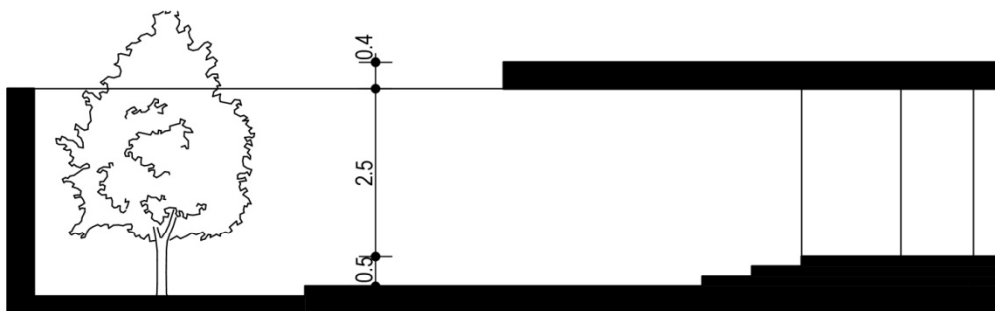
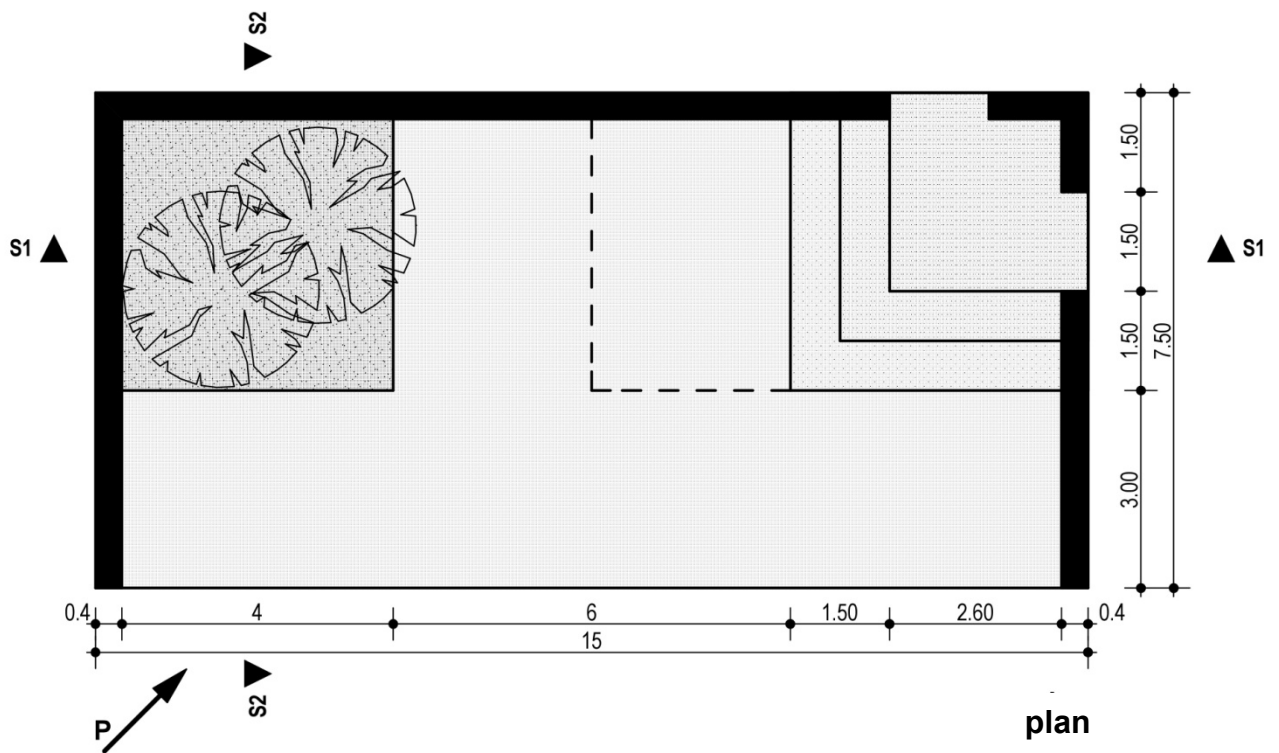
The representation will be made in graphite, with lights and shadows.



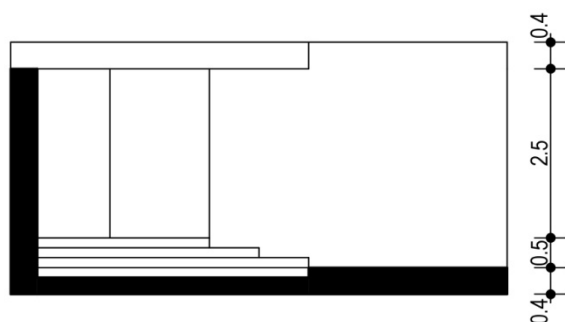
Subject no 3

The images below represent the plan and two sections of a possible architectural space. The dimensions are in meters.

Draw an eye-level perspective from the indicated point P, following the arrow, that contains architectural ambience elements: materials, textures, entourage etc. The representation will be made in graphite, with lights and shadows.



section S1



section S2

Subject no 4

The dictionary defines the portico as *an exterior gallery, bordered by a colonnade, sometimes with arches, that is used as a sheltering or walking space around a square, a building etc. or a monumental entrance.*

□ Using your **free hand**, sketch a representative building in which the portico is the main architectural element. The representation will be made in graphite, with lights and shadows.

Note:

- All subjects are mandatory.
- Respecting the pagination according to the below layout is mandatory.
- The representation of elements foreign to the content of the subjects is not allowed.

Criteria for assessing the topics:

- respecting the theme requirements;
- correctness of the solution;
- creative ability;
- perception and spatial representation;
- expressiveness and accuracy of the graphic presentation.

